



Sustainability and Green Energy Practice

March 2023

Mark Reisig, Executive Consultant & Sustainability and Green Energy Practice Director
m.reisig@CIMdata.com
+1.734.668.9922





Defining What Comes Next in Digital Transformation

Strategic management consulting for competitive advantage in global markets

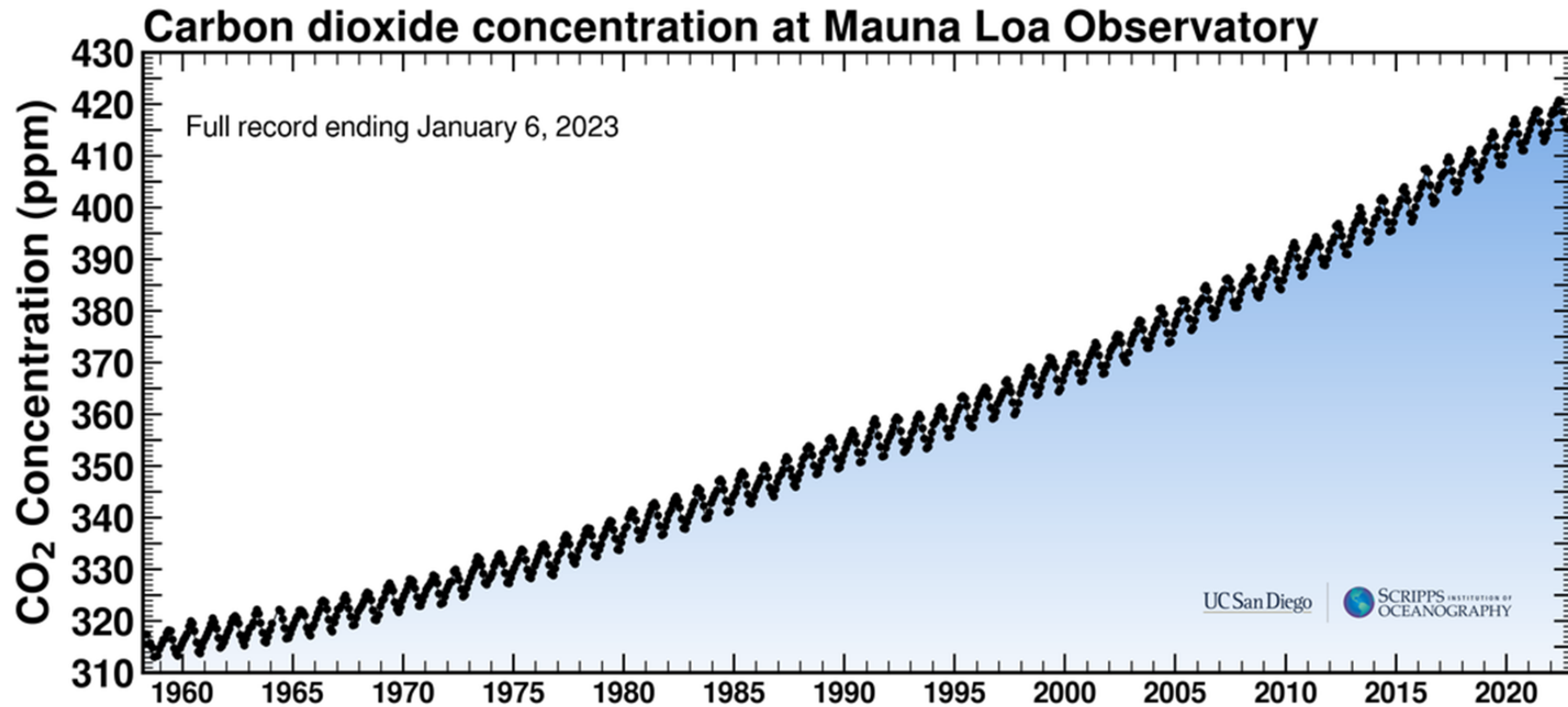
The leading independent authority on PLM and its digital transformation. We provide research, education, and strategic consulting to clients around the world.

OUR MISSION:

Maximizing clients' ability to design, acquire, deliver, and support innovative products and services.



"...Humans are changing the Earth's climate, primarily through GHG emissions." - NASA

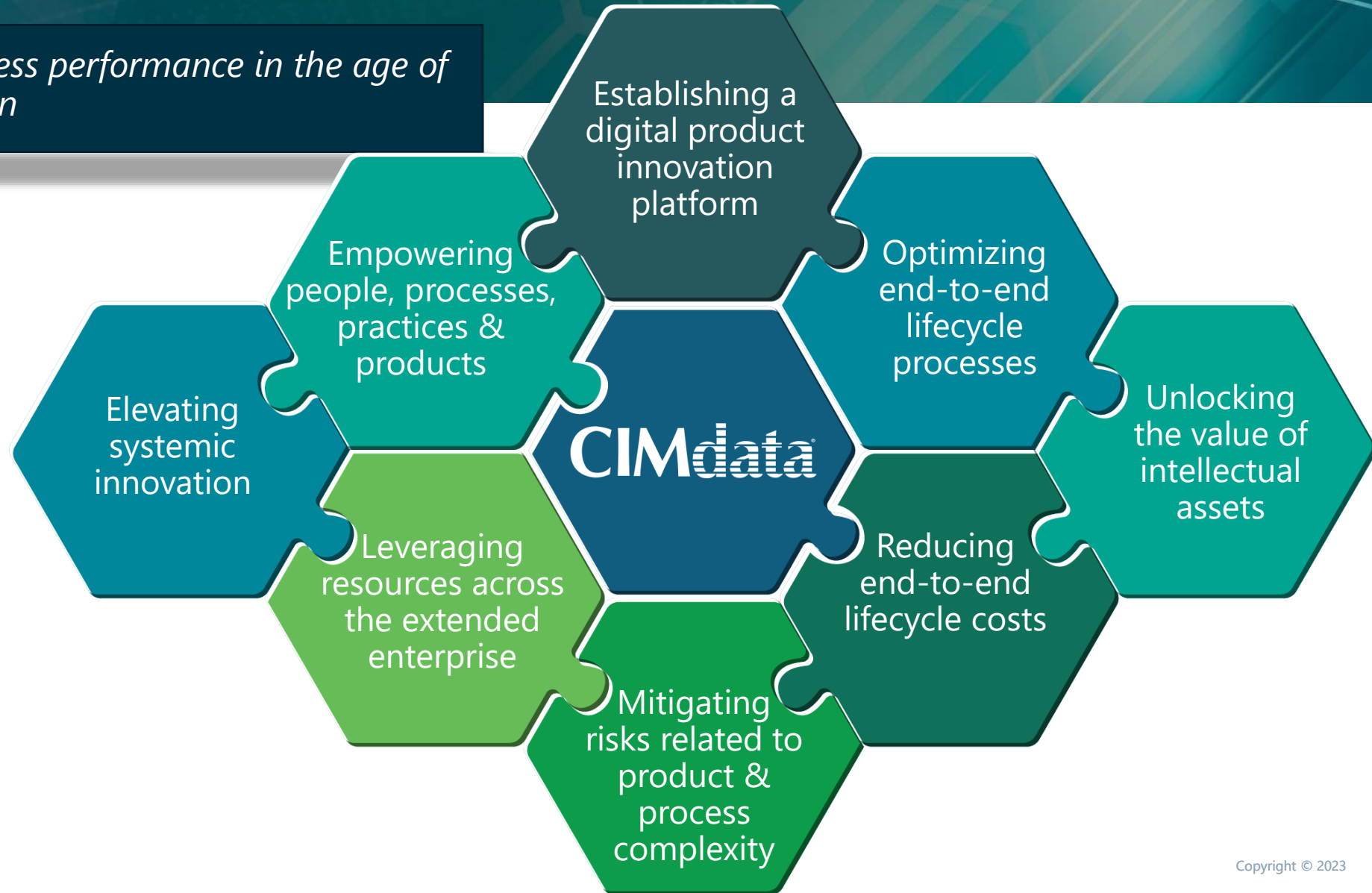


What We Do



We help boost business performance in the age of digital transformation

Expertise that improves our clients' ability to design & deliver sustainable "right to market" products & services



Our Services



Strategic advice & counsel through a comprehensive & integrated set of services



- Research & analysis
- Technology evaluations
- Market-specific insights
- Industry news & trends

- Industry conferences
- Seminars & webinars
- Certificate programs
- Best practices

- Strategic guidance
- Aligning solutions with needs
- Program management advisement
- Market positioning

Our Contribution



We facilitate and energize the global digital ecosystem

CIMdata sits at the critical intersection of the digital ecosystem, helping define & implement what's next



We address challenges & identify opportunities for both solution providers and industrial organizations

Sustainability and Green Energy Practice



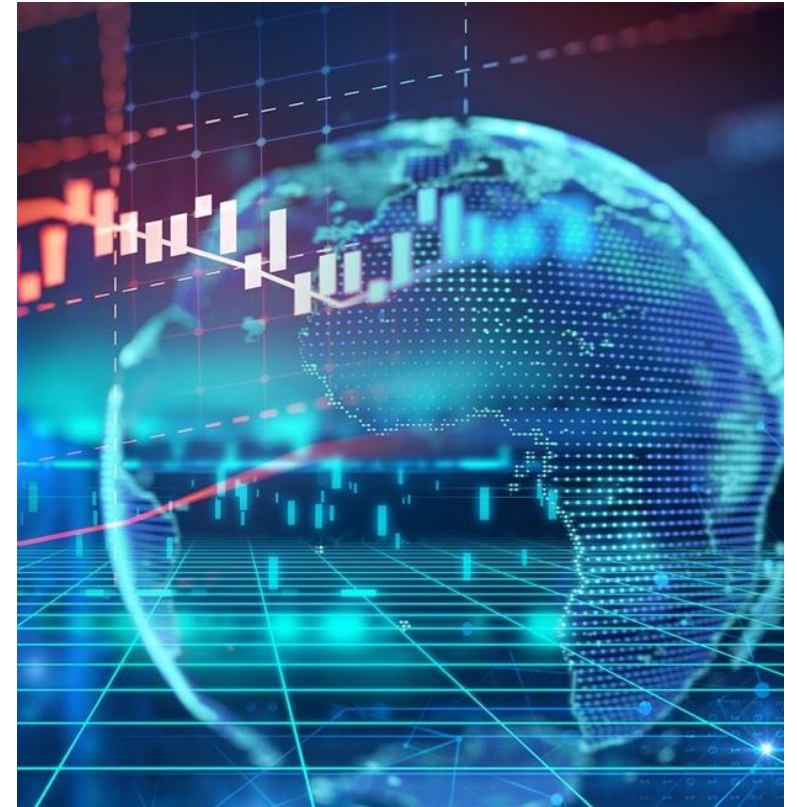
Sustainability and the green energy transition is the defining issue of our time

Mission

- Provide leadership to companies transitioning to sustainable carbon-free products and plants

Areas of Focus

- Provide management consulting services to enable clients to reduce their product carbon footprint
- Assist clients to design more sustainable eco-friendly products
- Enable clients to embed sustainability in PLM business strategies and enabling technologies through end of life
- Empowering circularity and the elimination of waste; increasing recyclability, reuse, and repurposing of materials and assets
- Evaluating new technologies and provide strategic management consulting services to help companies transform to meet the demands of a decarbonized "net-zero" future

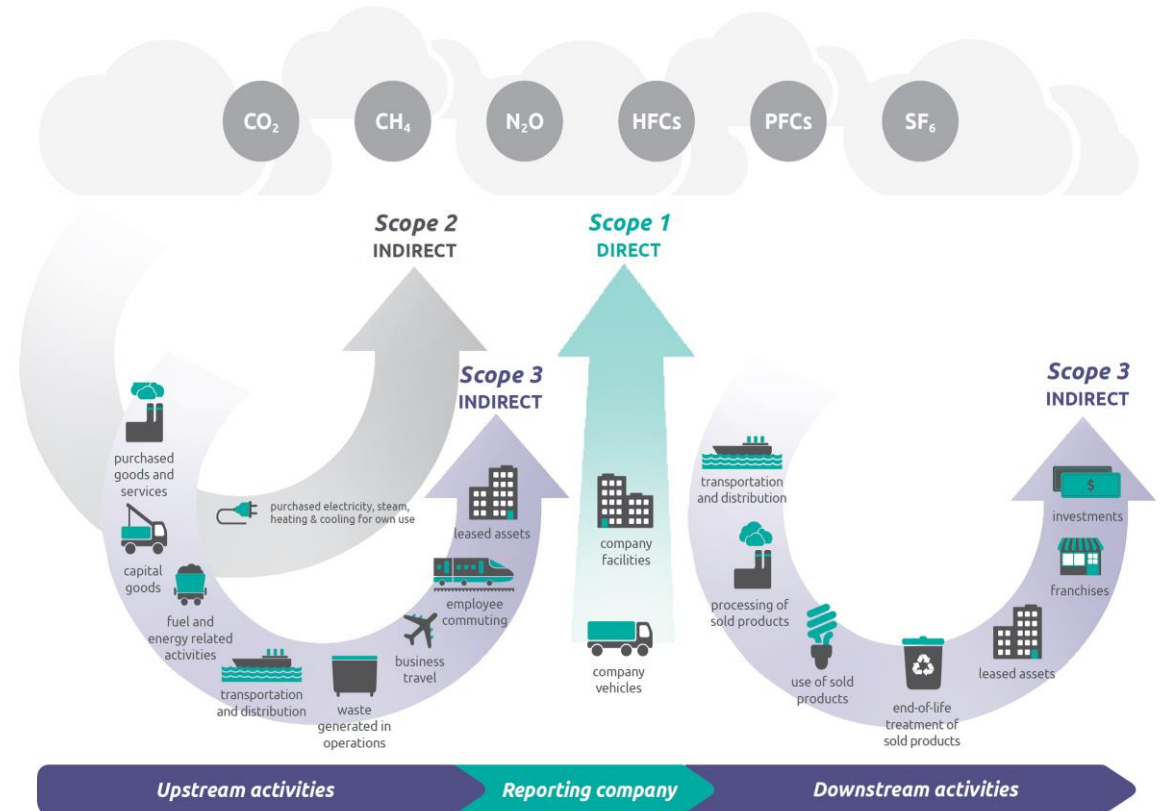


Reducing Product Carbon Footprint



Close the gap by reducing your product carbon footprint (PCF)

- Provide product design and sourcing with carbon dioxide equivalents (CO₂e) for all product materials and parts
- CO₂e should also be included for manufacturing processes and transportation (supplier miles)
- CO₂e should be included in the BOM throughout the product's lifecycle—every digital twin



Embedding Sustainability in PLM and S/C



Reducing your PCF requires a resilient, decarbonized supply chain

- The path to “net-zero” is through innovation—designing, manufacturing and servicing in a circular and sustainable manner.
- Sustainability should be embedded in PLM
- Product design and supply chain need to be more symbiotic
- Need to create a sustainable supply chain
- Sustainability and the transition to green energy provide an opportunity to be more resilient, more competitive, profitable with people and planet in mind.

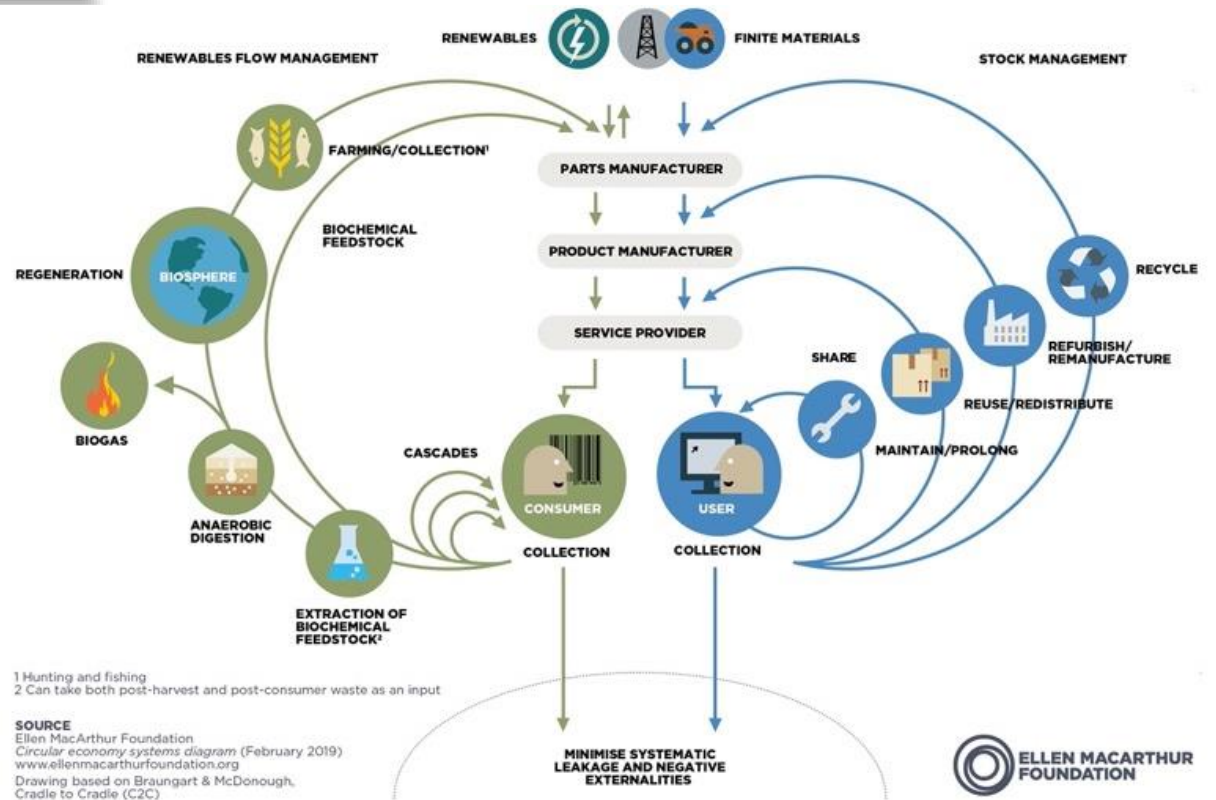


Circularity



The future demands a circular economy, which requires a new approach

- Circularity is the ability to keeping materials and products in perpetual use by eliminating waste and pollution by design
- Design out waste and pollution
- Keep products and materials in use
- Regenerate natural systems

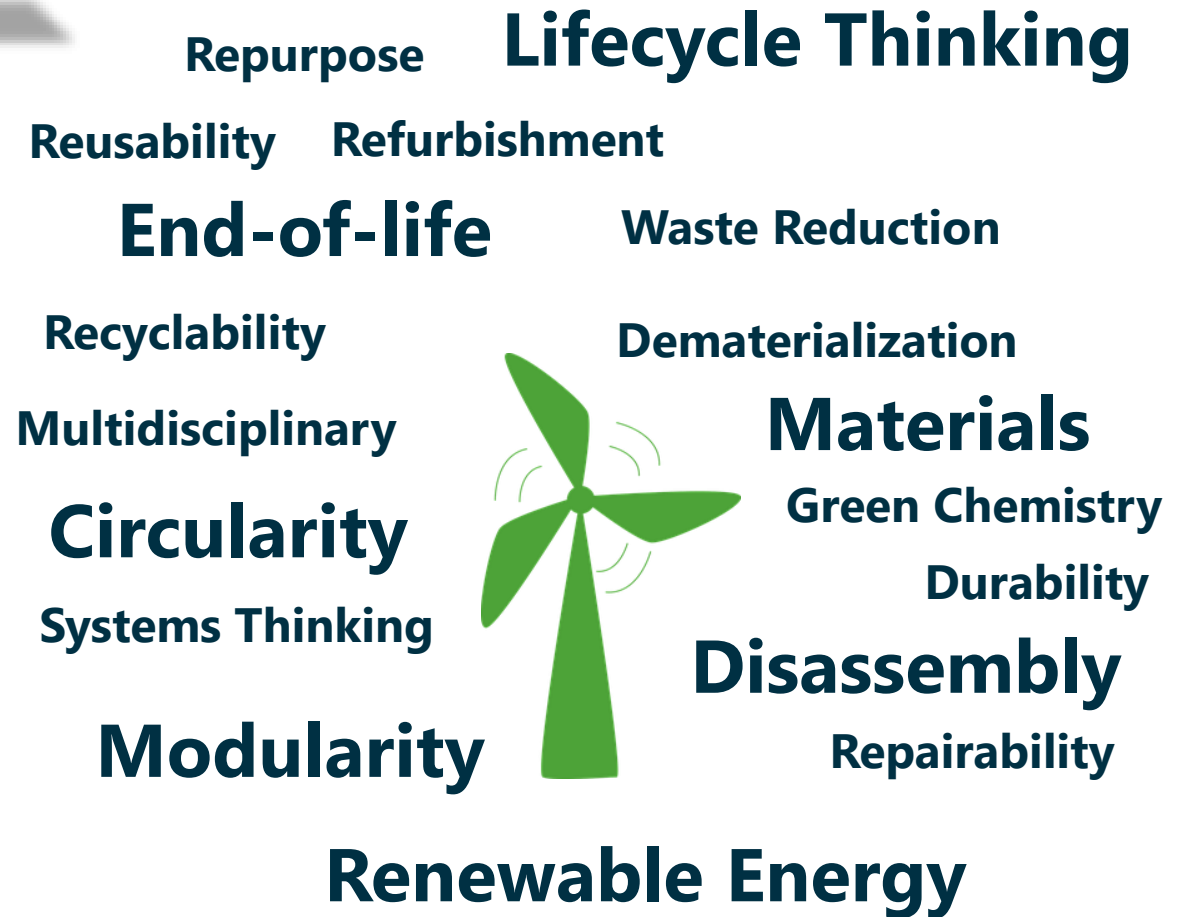


Sustainable Design



Sustainability should be embedded in PLM

- To achieve sustainable design, the product must have a low carbon footprint, be circular, and 100% waste free.
- A key element to sustainable design is designing with the end-of-life in mind.



Sustainability and Green Energy



Sustainability is no longer a choice

- The time for impact is now
- Reduce your product carbon footprint
- Embed sustainability in PLM
- Create a sustainable supply chain
- Eliminate waste
- Close the gap on attaining your net-zero ambitions



https://en.wikipedia.org/wiki/The_Blue_Marble

To Learn More...

- Mark Reisig, Executive Consultant, Sustainability and Green Energy Practice Director
- m.reisig@CIMdata.com
- Mobile: +1.864.320.7987
- CIMdata has several useful resources on this topic:
 - [Sustainability and Green Energy Consulting Practice](#)
 - Webinar: [The Green Energy Transition and Sustainability](#), January 23, 2023
 - Event: [CIMdata PLM Market & Industry Forum \(North America\)](#), March 30, 2023, Ann Arbor, MI
 - Webinar: [Webinar: Meeting Sustainability and Green Energy Transition Objectives: The industrial Perspective](#), April 27, 2023, 11:00 AM EDT
 - Article: [Accelerating the Transition to Green Energy with Product Lifecycle Management \(www.powermag.com\)](http://www.powermag.com), February 9, 2023
 - Article: [Climate Change is Transforming PLM Strategies \(IndustryToday.com\)](http://IndustryToday.com), March 10, 2023

CIMdata

Defining What Comes Next in Digital Transformation



*Strategic management consulting for
competitive advantage in global markets*

Serving clients from offices in North America, Europe, and Asia-Pacific

World Headquarters

Ann Arbor, Michigan USA
Tel:+1.734.668.9922

EMEA Headquarters

Weert, NL
Tel:+31 (0) 495.533.666

Asia-Pacific Headquarters

Tokyo, Japan
Tel:+81.47.361.5850

www.CIMdata.com